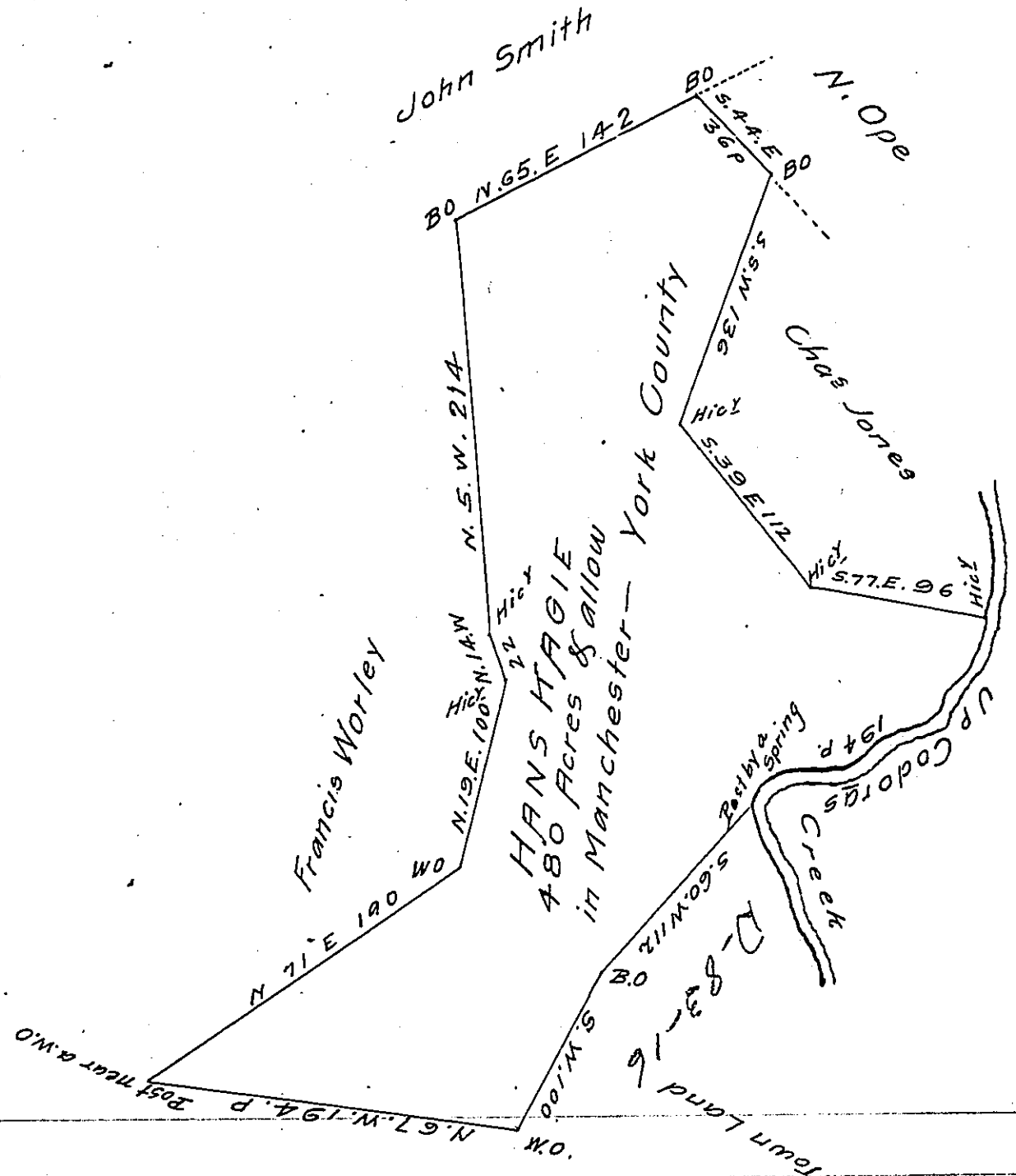


FORM NO. 1.



Nich: Buts

A Draught of Hans Magie's Land situate in Manchester -  
 late in the County of Lancaster but since the division  
 of the same in ye County of York Containing Four hundred  
 & eighty acres of land & the allowance of six p Cent for  
 roads &c. By Virtue of the Honble Proprietaries Warr<sup>t</sup>  
 bearing date the 24<sup>th</sup> Mar. 1740

Survey'd the 7<sup>th</sup> April 1742

By The Cookson  
 Dep. Surr<sup>t</sup>

To Nicholas Scull Esq<sup>r</sup>  
 Surr<sup>t</sup> Gen<sup>l</sup>

\* Say Hans Haghy

IN TESTIMONY that the above is a copy of the original remaining on file in  
 the Department of Internal Affairs of Pennsylvania, made  
 conformably to an Act of Assembly approved the 16th day of  
 February 1833, I have hereunto set my hand and caused  
 the Seal of said Department to be affixed at Harrisburg,  
 this thirtieth day of April 1907

*Lauchlin Curran*  
 Secretary of Internal Affairs.